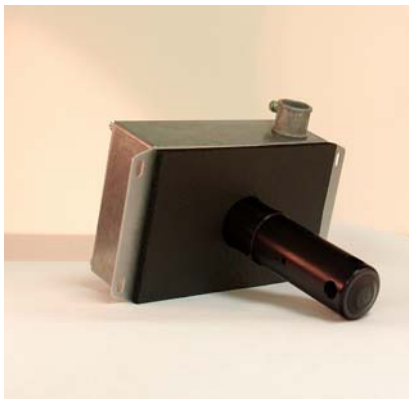


# DewTrak II

## Dew Point / Humidity Transmitter



Wall Mount  
With AT probe



Duct Mount

### Optical Chill Mirror Hygrometer

The EdgeTech Model DewTrak II dew point / humidity transmitter is an optical chill mirror hygrometer designed to continuously measure the moisture content in gases. The instrument is powered by 24Vdc. The DewTrak II uses the chilled mirror dew point temperature condensation principle to determine the water vapor concentration in gas mixtures, and a platinum resistance thermometer to accurately measure that temperature. Outputs include 4 to 20mA, 0 to 5 Vdc, or 0-10Vdc and an RS232 serial port as well as electrically isolated relay contacts.

#### ► Configuration Options

Various housings are available for most applications which include:

- Wall Mount
- Duct Mount
- Pipe Mount
- Remote Type

#### ► Features

- 4 wire PRT measurement for Dew Point and AT (optional)
- $\pm 0.2^{\circ}\text{C}$  Accuracy for both Dew Point and Temperature
- Long term stability and repeatability
- RS232, bi-directional, Serial Output
- Electronics housed in IP65 enclosure (Wall Mount)
- Aluminum housing for other configurations
- 2 analog outputs  
(4-20mA / 0-5Vdc to 0-10Vdc selectable)

#### ► Options

- **AT** Air Temperature
- **RD** 2 line LCD display (graphical display)  
Three parameter displayed at one time
- **AC** AC universal supply 85 to 230Vac
- **SC1** Flow through sample chamber
- **HPO** High Pressure (20 bar)

## SPECIFICATION

<b>Range:</b>	Dew Point (Standard)	-40°C to 60°C	(-40°F to 140°F)
	Air Temperature (Optional)	-40°C to 60°C	(-40°F to 140°F)
	RH (Optional)	1% to 95%	
<b>Accuracy:</b>	± 0.2°C for both Dew Point and Temperature		
<b>Hysteresis:</b>	Negligible		
<b>Repeatability:</b>	±0.05°C		
<b>Response:</b>	1°C/sec not including settling time		
<b>Flow Rate:</b>	Static to 3,000 linear ft/min		
<b>Pressure:</b>	100 psig maximum (higher pressure available on special order)		
<b>Analog Outputs:</b>	2 analog outputs (4-20mA / 0-5 Vdc to 0-10Vdc selectable)		
Load:	4 to 20mA:	0 to 250 ohms	
	0 to 5/10 Vdc:	1 K ohm or higher	
<b>Relay Outputs:</b>	2 programmable alarm relays		
K1:	Clean mirror / Alarm 1		
K2:	Servolock / Alarm 2		
Contact Rating:	Normally Open (NO) 3A at 25Vac, 0r 30Vdc		
<b>Remote Cable Configuration:</b>			
Dew Point:	10 ft. standard, 50 ft. maximum		
Air Temperature (Optional):	10 ft. standard, 50 ft. maximum		
<b>For Dew Point:</b>	2 stages of cooling (TEC) with a depression of 60°C		
<b>Mirror:</b>	Standard: Chrome plated		
	Optional: Gold or Platinum		
<b>Power Supply:</b>	24Vdc ± 20%, 1A maximum		
<b>Weight:</b>	3 lbs. or 1.4 kg		

### DEW POINT TRANSMITTER WITH 2 STAGE SENSOR

#### STANDARD FACTORY CONFIGURATIONS

Model	Description
DT-PL-W	Wall Mount in a Plastic (IP65) enclosure
DT-AL-W	Wall Mount in an Aluminum enclosure
DT-PL-D	Duct Mount in a Plastic (IP65) enclosure
DT-AL-D	Duct Mount in an Aluminum enclosure
DT-PL-R	Remote Mount in a Plastic (IP65) enclosure
DT-AL-R	Remote Mount in an Aluminum enclosure
DT-PL-P	Pipe Mount in a Plastic (IP65) enclosure
DT-AL-P	Pipe Mount in an Aluminum enclosure